

## ANTI-SLIP SOLUTIONS



### DESCRIPTION

Flex-Deck by Vigil Antislip, is specifically engineered as an excellent slip resistant surface for walking on pipes and uneven surfaces. Flex deck grades are Industrial or Offshore.

FLEX DECK is a safe and secure pedestrian access:

- light weight
- easy to use
- easily rolled up for compact storage
- available in two non-slip patterns
- aluminum foundation

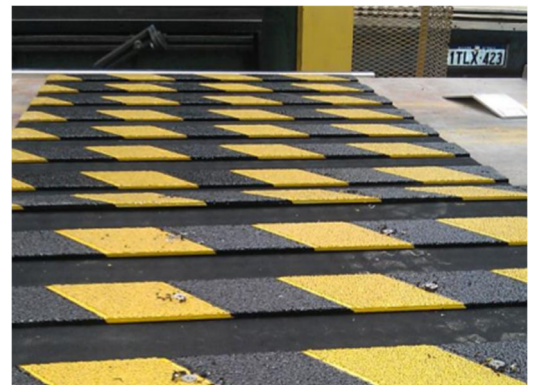
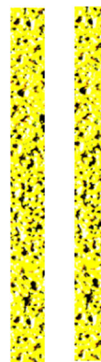
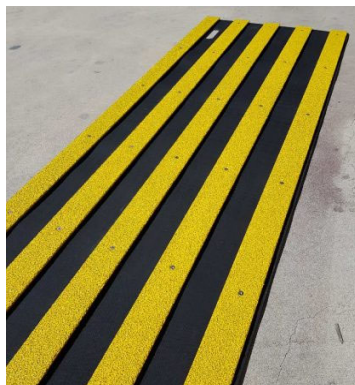
Uneven and irregular surfaces are potentially deadly, and demand special antislip protection. FLEX DECK creates a safe, highly visible, and adaptable walkway almost anywhere.

Options include transverse or longitudinal, colors and grades.

### SPECIFICATIONS

|                            |   |
|----------------------------|---|
| Application                | For walking on pipes or uneven surfaces.  |
| Surface Installation       | Place atop pipes or surface and roll out.   |
| Grades                     | Industrial - Applicable in most external areas where there may be spillage and/or soilage of lubricants.<br>Offshore - Ideal for areas where there is a high buildup of grease or oil. This surface is the most severe and is not affected by very heavy spillage and soilage of chemicals or lubricants. |
| Foundation                 | 4.0mm marine grade aluminum.  |
| Fabric Medium              | Floating on steel foundation and integrated with a key coat of resin system.  |
| Resin System               | All layer's hand laminated – not sprayed. Cured at optimum temperature and humidity- no oven use.   |
| Aggregate                  | Silicon Carbide (SiC), Moh's hardness rating of 9.2-9.5.  |
| Aggregate Sizes            | Industrial grade is 20 mesh. Offshore grade is 12/20 mesh matrix.   |
| Resistance                 | To all solvents, petroleum products and acid solutions.   |
| Configuration Capabilities | Transverse up to 16.4ft x 3.28ft (5.0m x 1.0m). Longitudinal up to 7.87ft x 3.28ft (2.4m x 1.0m). Custom manufactured sizes available.  |
| Weight                     | 2.97 lbs./ft <sup>2</sup> (14.5 kg/m <sup>2</sup> )   |
| Colors                     | Safety yellow is standard for all Offshore and Industrial applications. Royal blue, ochre, slate black, rust, tropical green, chocolate brown, platinum (also available in off white), cardinal red. Can match RAL/Pantone upon request.  |

### INSTALLATIONS



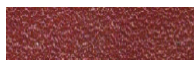
## FLEX DECK OPTIONS



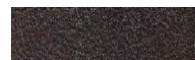
Safety Yellow  
(Standard for all Offshore & Industrial applications)



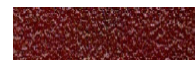
Royal Blue



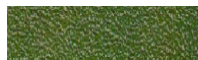
Ochre



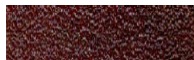
Slate/Black



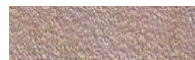
Rust



Tropical Green



Chocolate Brown



Platinum  
(also available in off white)



Cardinal Red

## WEIGHTS AND DIMENSIONS

|                   | TFD-Transverse Flex Deck                            | LFD-Longitudinal Flex Deck                          |
|-------------------|---|---|
| Dimensions: L x W | up to 5.0m x 1.0m                                   | up to 2.4m x 1.0m                                   |
| Weight            | 2.97 lbs./ft <sup>2</sup> (14.5 kg/m <sup>2</sup> ) | 2.97 lbs./ft <sup>2</sup> (14.5 kg/m <sup>2</sup> ) |

## SERVICES

Our experienced personnel are ready to help. We can accomplish services via telephone, email and/or online conferencing with or without video.

|           |  |
|-----------|--|
| Design    | From concept to production we provide comprehensive design services, most projects are free of charge.   |
| Surveying | AMS® trained personnel can have boots on the ground or sea, globally to survey your area. We will carry out the work according to your schedule to ensure minimal disruption to your operations. |

## ORDERING DETAILS

| Product Code | Length     | Width      | Grade                  | Color                   |
|--------------|------------|------------|------------------------|-------------------------|
| TFD          | up to 5.0m | up to 1.0m | Industrial or Offshore | Safety Yellow or select |
| LFD          | up to 2.4m | up to 1.0m | Industrial or Offshore | Safety Yellow or select |

## WARRANTY

10-year limited replacement warranty. Terms apply.

## VIGIL ANTISLIP AUTHORIZED DISTRIBUTOR CONTACT

MADE IN THE AUSTRALIA

Advanced Mat Systems  
FlexDeck  
E: [sales@advancedmatsystems.com](mailto:sales@advancedmatsystems.com)  
T: 1.403-910-1492

# FLEX DECK

ADVANCED MAT SYSTEMS®  
Telephone 1-403-910-1492  
Email [sales@advancedmatsystems.com](mailto:sales@advancedmatsystems.com)  
[FlexDeck](#)

# AMS

Advanced Mat Systems