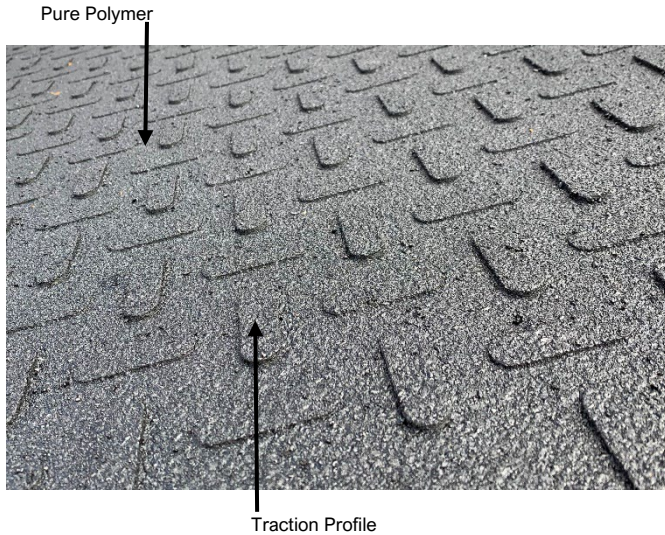


## TOPSIDE DECK PROTECTION



### DESCRIPTION

AMS© LAYDOWN MATS are used to protect decks and equipment while providing safe footing from slips, trips and falls. They are lightweight and can be easily moved around. AMS© uses pure polymer that exceed in durability, performance, and lifespan. This product contributes to safe and efficient material handling operations.

Manufactured in the USA:

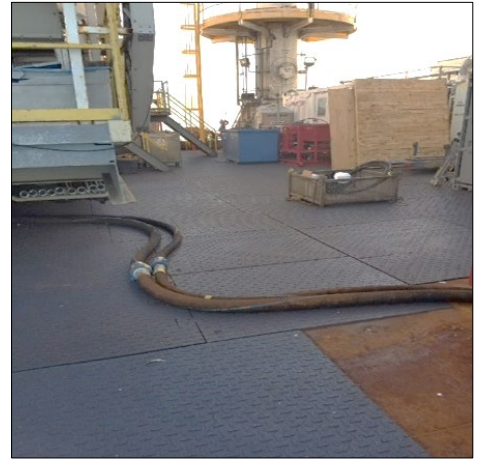
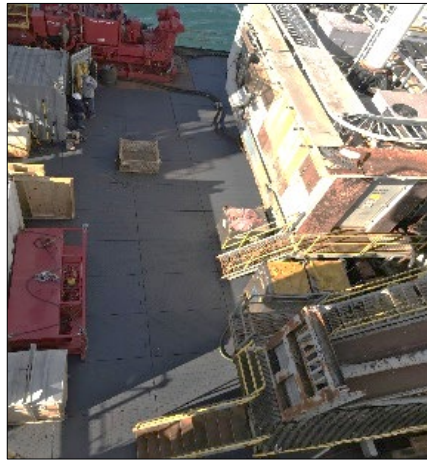
- Chemical, corrosive, and diesel resistance
- Stress and impact resistance
- Deck and equipment protection
- Lightweight
- Portable or permanent installation
- Build to any size and shape for a custom fit

We are committed to customer satisfaction and responsible manufacturing of high quality products. We stand behind every product so you can do what you do best.

Options include choice of colors, emboss/deboss of logos, symbols, text, beveled edges, hazard identification and more.

### SPECIFICATIONS

Application	Deck surfaces, topside platforms, vessel, container/personnel landing areas, etc. for deck protection		
Surface Installation	Place atop steel, concrete, wood, etc.		
Thickness	Standard 0.75" (19mm).		
Weight (+/- average)	1.0 ft <sup>2</sup> (@0.75") = 3.9 lbs. / 1.0 m <sup>2</sup> (@19mm) 19 kg.		
Surface Options	LP-low profile with SL coating.		
Options	Logos, symbols, text, penetrations, beveled edges, hazard ID, and more.		
Color	Standard colors are Yellow, Green, Red, Black and Gray. Most RAL colors can be accommodated.		
AMS Color Sync	All LAYDOWN MAT are manufactured with homogenous color from the top to bottom including color matching coatings.		
Sound Dampening	Decreases sound transmission by absorption		
Resistance	Excellent against corrosion and chemicals, withstands grease, oils and is fungus resistant (non-nutrient).		
Repairability	Excellent		
Ergonomic Benefits	Yes		
Ultraviolet Stability	Yes		
Water Absorption %	Less than 0.01%		
Dielectric Properties	Electrically dissipative		
	<b>Test</b>	<b>Imperial</b>	<b>Metric</b>
Tear Strength	ASTM D-624	752 lb./in	132 Kn/m
Tensile Strength	ASTM D-412 die C	4,835 psi	33 MPa
Service Temperatures		-40°F to 200°F	-38°C to 93°C
Hardiness	ASTM2240-85	75-85 Shore A	
Elongation	ASTM D-412 die C	726%	



**OPTIONS**

Yellow



Green



Red



Black



Grey



Safety is visual, AMS© offers a variety of value-added options.

Name	Details
Beveled Edge	Chamfered edge(s) or perimeter. This allows for smooth transition between surfaces or varying heights.
Color	Standard colors are Yellow, Green, Red, Black and Gray. Other colors upon request.
Emboss/Deboss	Text, logo, safety message, symbols either molded in or raised from mat surface.
Puzzle Locks	Molded in matting to easily link for installation ease.
Resurfacing Kit	Revive top coatings with AMS© kits that includes everything needed for onsite personnel to complete.
Customization	Just ask and we are happy to be of service.

**WEIGHTS & DIMENSIONS**

Are manufactured to any length or width. In most cases, mats are custom built to specific dimensions.

	Imperial	Metric
Thickness-Standard	1/2", 3/4"	13, 19mm
Weight (+/- average)	2.65, 3.9 lbs./ft <sup>2</sup>	13, 19 kg/m <sup>2</sup>

**INSTALLATION & MAINTENANCE INSTRUCTION**

Installation methods are typical, matting can be affixed with a variety of methods. LAYDOWN MAT can be easily cut on site with proper tools.

Routine housekeeping is simply good practice. Light steaming, strong detergent with scrub brushes and/or non-flammable solvent will cut oil and grease. Matting to be stored and transported flat. AMS© Resurfacing Kits are available.

## SERVICES

---

Our experienced personnel are ready to help. We skilled at conducting services via telephone, email and/or online conferencing with or without video.

Design	From concept to production we provide comprehensive design services, most projects are free of charge.
Surveying	AMS® trained personnel can have boots on the ground or sea, globally to survey your area. Work will be performed on your schedule, to not interrupt operations.

## ORDERING DETAILS

---

Product Code	Thickness	Color	Options
LD-TC90-19-LPSL	choose	choose	choose

## LIMITED WARRANTY

---

AMS® offers a 2-year limited product warranty. Terms apply.

## CONTACT

---

Advanced Mat Systems  
Topside Deck Protection  
E-mail: [sales@advancedmatsystems.com](mailto:sales@advancedmatsystems.com)  
T: 1.403.910.1492

**100% MADE IN THE USA**

## TOPSIDE DECK PROTECTION

# LAYDOWN MAT

ADVANCED MAT SYSTEMS®  
Telephone: 1-403-910-1492  
Email: [sales@advancedmatsystems.com](mailto:sales@advancedmatsystems.com)  
Topside Deck Protection

**AMS**  
Advanced Mat Systems