

ANTI-SLIP SOLUTIONS



DESCRIPTION

Vigil Antislip Metal Deck provides highly effective long-term protection for all industrial surfaces, including grating, checker plate and diamond plate. Metal Deck eliminates the dangers of slips, trips and falls. Grades include Offshore, Industrial or Commercial.

- colorbond steel, stainless steel, or aluminum foundation
- easy installation
- color options
- effective non-slip solution
- long lasting

Where straight walkways exist such as beside conveyors, the metal deck can be spaced up to 150mm between sheets so that either heel or toe contact is achieved. This allows spillage to pass through the grating walkway and offers considerable cost savings whilst eliminating any chance of slips occurring.

Options include foundation, colors, deck mark, sizes and grades.

SPECIFICATIONS

Application	For industrial, offshore, and commercial foot traffic areas.
Installation	Options include saddle assembly, TEK / concrete / timber screws and/or adhesives.
Dimensions	Multiple options
Colors	Variety available
Markings	Deck mark for text, symbols or directional arrows.
Grades	Industrial – designed for external areas where there may be spillage and/or soilage of lubricants. Offshore - ideal for areas where there is a high buildup of grease or oil. This surface is the most severe and is not affected by very heavy spillage and soilage of chemicals or lubricants. Commercial – apply in areas where heavy spillage and soilage do not exist.
Foundations	Class 1: Steel foundation – 1.2mm colorbond steel / 1.2mm stainless steel / 2.0mm or 4.0mm aluminum Class 2: Steel foundation – 1.2mm colorbond steel Class 3: Steel foundation – 1.2mm galvanized steel
Steel / Resin Interface	Floating fabric membrane (class1). Epoxy primer (class 2 and 3)
Aggregate	Silicon Carbide (class 1). Fused alumina (class 2 and 3)
Aggregate Sizes	Depending on application and environment mesh sizes/matrixes range from 12-46.
Resistance	Impervious to any fluid spillage and weather conditions.

INSTALLATIONS



METAL DECK OPTIONS

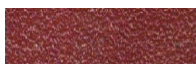
The color of metal deck is not as important as stair nosing and ladder rung covers. Safety Yellow is often used to highlight the safe zones; however, this may become dirty from spillage and soilage. Because of this, many companies are turn to our alternative colors.



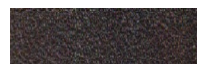
Safety Yellow



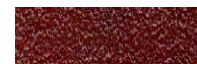
Royal Blue



Ochre



Slate/Black



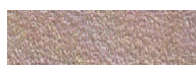
Rust



Tropical Green



Chocolate Brown



Platinum
(also available in off white)



Cardinal Red



Tiger Striped



Deck Mark – surface applied permanent writing and/or symbols.
Standard marking, designs and direction indicators available

DIMENSIONS

When laying each sheet of Metal Deck, there can be a spacing of up to 150mm (6 inches) between sheets.

	Width	Depth
Dimensions (mm)	450, 600, 750, 900, 1200	200, 600
Dimensions (inches)	17.7, 23.6, 29.5, 35.4, 47.2	7.9", 23.6"

INSTALLATION

For open grille/grating installation, Metal Deck may be installed with stainless steel or galvanized Saddle Assemblies by one person. This is also the method to install Metal Deck where access under the grating is not available.

Fastener

Saddle Assembly – Galvanized or Stainless-Steel (For grating bars up to 70mm)

Includes

Saddle plate, nyloc nut, M6x50mm countersunk bolt

AMS® SERVICES

Our experienced personnel are ready to help. We can accomplish services via telephone, email and/or online conferencing with or without video.

Design	From concept to production we provide comprehensive design services, most projects are free of charge.
Surveying	AMS® trained personnel can have boots on the ground or sea, globally to survey your area. We will carry out the work according to your schedule to ensure minimal disruption to your operations.

ORDERING DETAILS

Product Code	Width	Depth	Grade	Color	Deck Mark Options
VA-MD	select	select	Industrial or Offshore or Commercial	select	text, symbols, arrows

Product Code - Fasteners

12-205, Saddle Assembly – Galvanized
12-210, Saddle Assembly – Stainless-Steel

WARRANTY

10-year limited replacement warranty. Terms apply.

VIGIL ANTISLIP AUTHORIZED DISTRIBUTOR CONTACT

MADE IN THE AUSTRALIA

Advanced Mat Systems
Metal Deck
E: sales@advancedmatsystems.com
T: 1.403-910-1492

METAL DECK

ADVANCED MAT SYSTEMS®
Telephone 1-403-910-1492
Email sales@advancedmatsystems.com
Metal Deck

AMS
Advanced Mat Systems